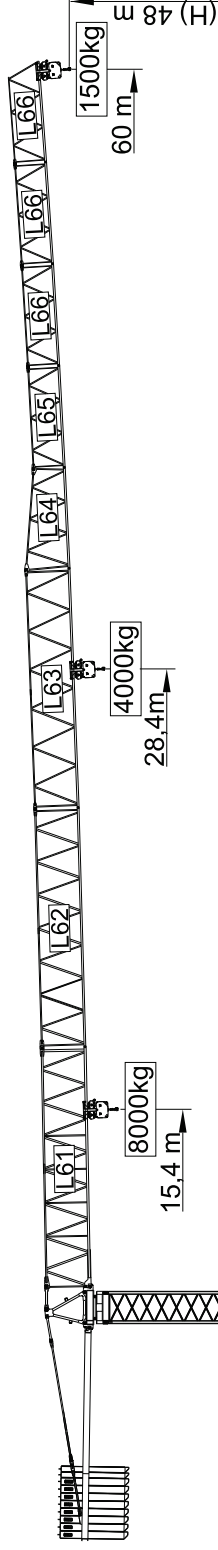
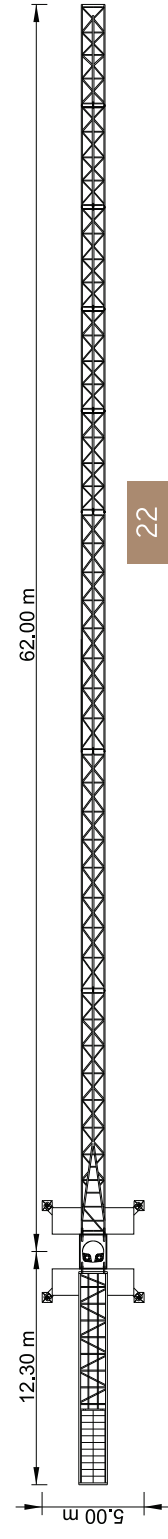
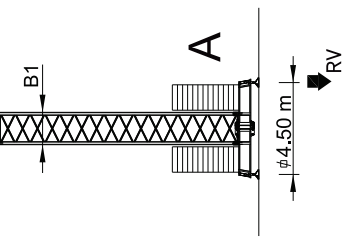
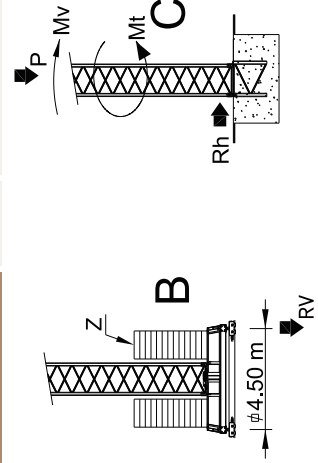


65m - 1.200kg **I** 55m - 2.000kg **II** 50m - 2.300kg **III** 45m - 2.600kg **IV** 40m - 2.900kg **V** 28m - 3.100kg **VI** 28m - 3.100kg **VII**



Cargas, Lasten, Charges, Cargas, Сarіgіші, Yükler, грузоподъёмность

Weight (kg)	Height (m)	kg/m	8000 M/RT 4000 Kg	18	23	28	33	38	40	45	50	55	60	65
20000 kg 7x2000 + 4x1500 kg	65m	26,6 m	14,4 m	4000	4760	3780	3090	2590	2420	2070	1780	1550	1360	1200
18000 kg 6x2000 + 4x1500 kg	60m	28,4 m	15,4 m	4000	4000	4000	3350	2810	2640	2270	1970	1730	1500	1500
18000 kg 6x2000 + 4x1500 kg	55m	32 m	17,3 m	4000	4000	4000	3860	3260	3060	2640	2310	2000	2000	2000
18000 kg 6x2000 + 4x1500 kg	50m	32,4 m	17,5 m	4000	4000	4000	3910	3300	3100	2680	2300	2000	2000	2000
16000 kg 5x2000 + 4x1500 kg	45m	32,1 m	17,3 m	4000	4000	4000	3870	3270	3070	2660	2300	2000	2000	2000
14000 kg 4x2000 + 4x1500 kg	40m	31,2 m	16,8 m	4000	4000	4000	3740	3150	2900	2600	2300	2000	2000	2000
13000 kg 5x2000 + 2x1500 kg	38m	31,5 m	17 m	4000	4000	4000	3790	3100	2900	2600	2300	2000	2000	2000
11000 kg 4x2000 + 2x1500 kg	33m	30,4 m	16,4 m	4000	4000	4000	3500	3100	2900	2600	2300	2000	2000	2000








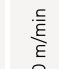




# SGT 6015TL

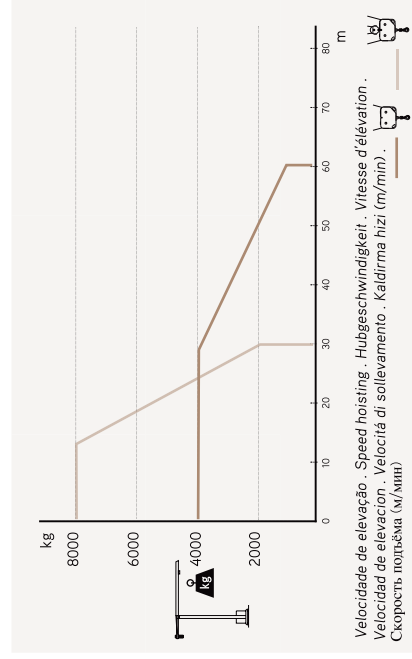
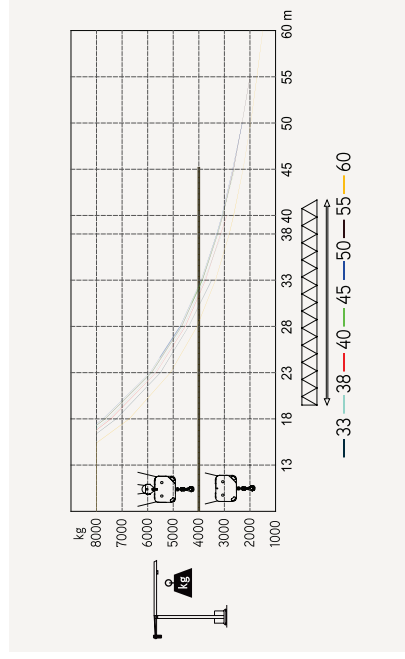
60m - 1.500kg

8.000kg

Características . Characteristics . Eigenschaften . Ozellikler . ХАРАКТЕРИСТИКИ

	22 kW
	0 a 72 m/min 0 a 36 m/min
	2x5 daNm
	0 a 1 r.p.m.
	5,5 kW
	0 a 60 m/min
	2x3 kW
	15 m/min
	35 kVA
	400 V +- 5% (50/60 Hz)

\*Opción . Option . Opzioni . Opzione . Seçenek . Опция



Velocidade de elevação . Speed hoisting . Hubgeschwindigkeit . Vitesse d'élévation .  
Velocidad de elevación . Velocità di sollevamento . Kaldırma hızı (m/min) .  
Скорость подъёма (м/мин)

## Elementos . Parts . Teile . Eléments . Elementos . Elementos . Elements . Elemenți . Pargalar . УПЯМЕНЯТБИ

	A (mm)	B (mm)	C (mm)	kg	Code
L61	11850	1310	2900	4280	
L62	11850	1160	2250	1280	
L63	11850	1160	2250	1020	
L64	5110	1160	2250	400	
L65	5110	1160	1610	330	
L66	5110	1160	1610	3x300 900	531 60 15
RS8 RIB	2250	1600	2050	3120	
P2	1650	1320	2030	750	
CL4	11400	1500	500	4000	
CP3	1160	165	3140	6x2000 12000	704 10 00
CP1	1160	330	3140	4x1500 6000	704 20 00
			TOTAL	34080	
B1	12000	1620	1620	3450	508 12 00
B1	6130	1620	1620	1800	508 06 00
B1	3195	1620	1620	1070	508 06 01
B1	3195	1830	1830	1100	508 06 03
B1	1775	1600	1600	650	508 06 02
B1	6620	500	1040	1850	608 00 01
B1	3210	340	1040	2x950 1900	
			TOTAL	3750	

